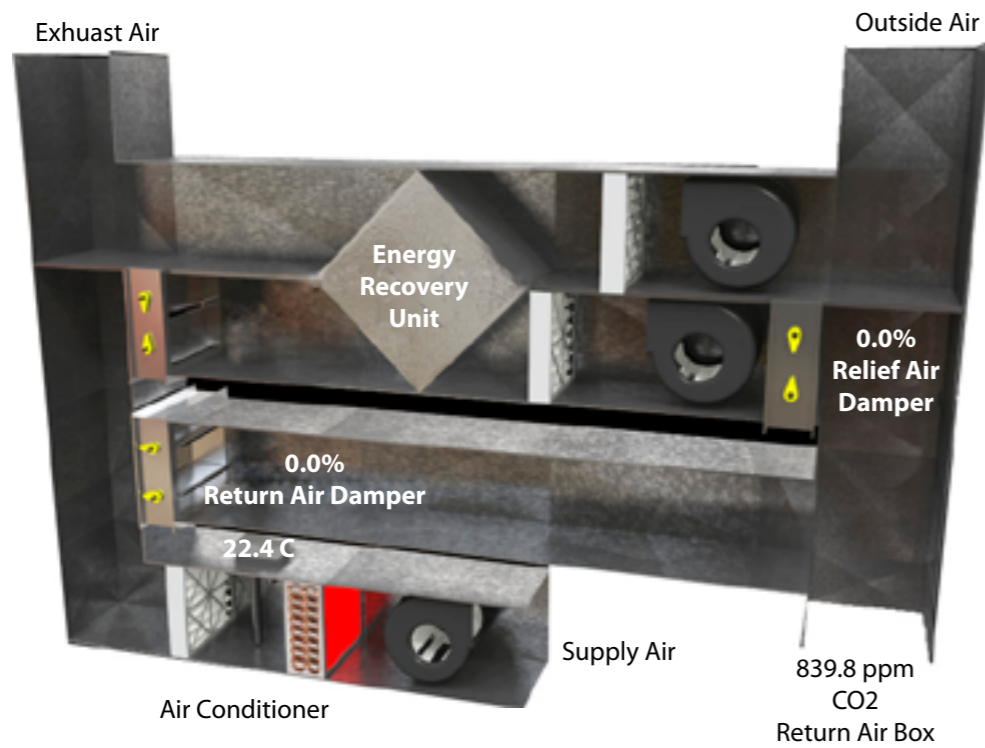




Superior Control **Solutions**

Case Study:
Bonner Primary School

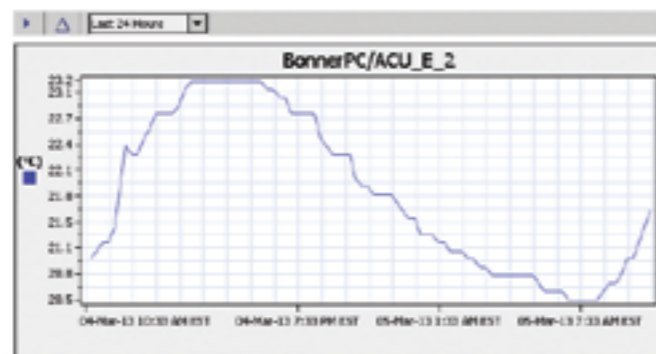
www.superiorcontrolsolutions.com.au



Bonner Neville Primary School

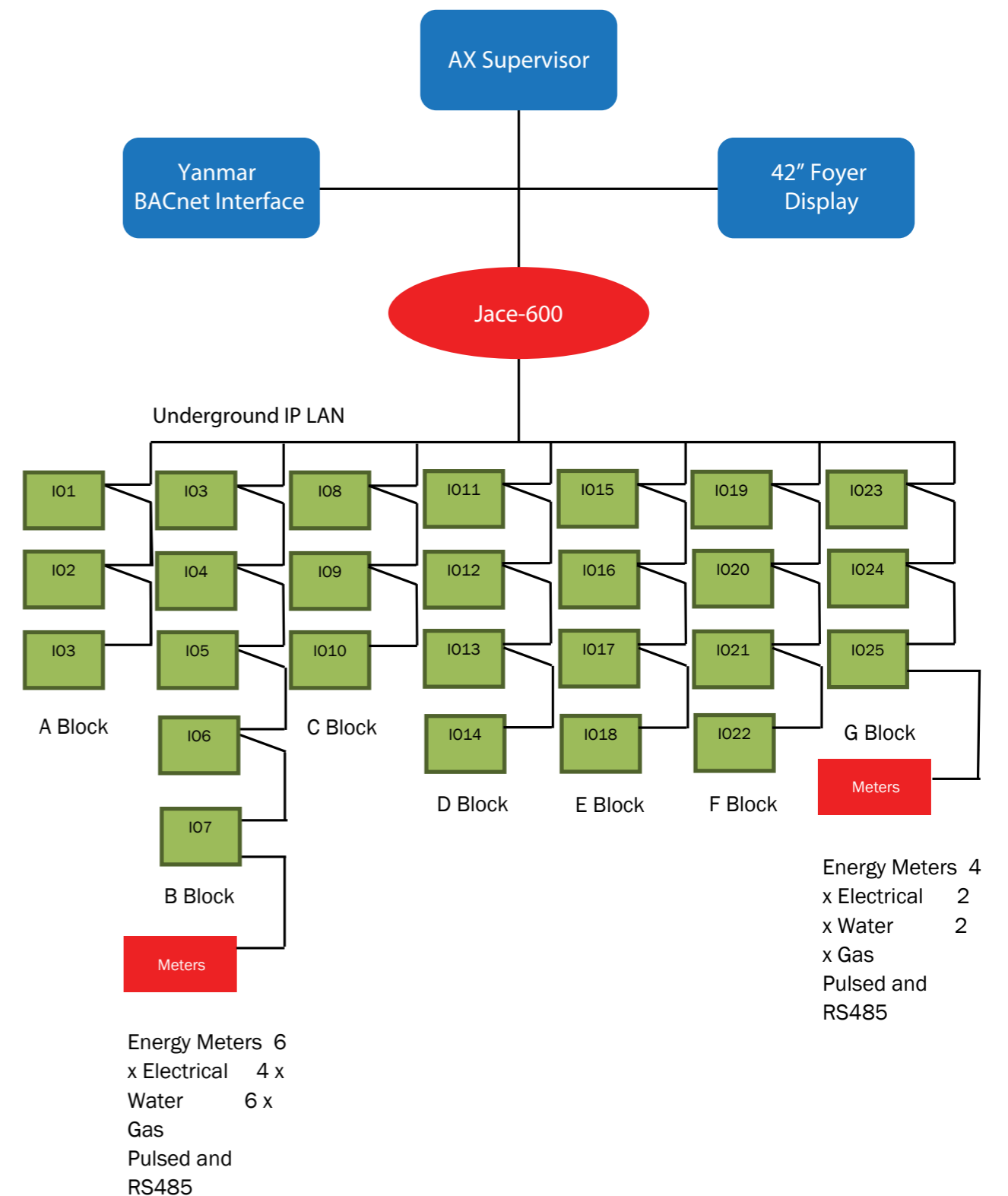
Bonner Neville Primary School was constructed in 2013 to provide K-Yr6 education to Bonner and surrounding suburbs. The building consists of 7 buildings ranging from administration areas, classrooms, halls and libraries.

The mechanical service component for this project included 80 Yanmar gas powered VRF heat recovery systems, 40 high efficiency heat exchangers and various extraction systems. The functional scope revolved around an energy efficient system consisting of occupancy sensors, setpoint lock out, setpoint automatic control, optimum start, economy cycle, mode select, outside air lockout for minimum and maximum air on coil temperatures as well as carbon monoxide controls.



A 42" foyer display provides a revolving page display featuring floor layouts and FCU graphic pages for information and is also used as a learning tool. Network topology consisting of an underground CAT5e LAN as well as a DIII net Yanmar LAN connecting all Yanmar equipment via a BACnet HLI as well as 25 Easy IO 30p controllers including energy meters and MODbus RS485 connection in which the Easy IO 30 P converts BACnet points for distribution to the Jace-600 and AX Supervisor for logging and display.

Network Topology



P | 0438 230 395

F | 02 6242 6574

ABN 93 343 202 470

ACN 120 310 689

4 Benaroon Circuit, Amaroo ACT 2914

www.superiorcontrolsolutions.com.au